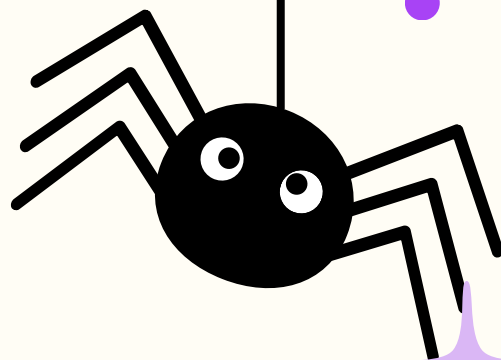


RCTE

OCTOBER 2025

NEWSLETTER



Did You Know?

October is Mental Health Awareness Month:

As a teacher, taking care of your mental health is one of the most important things you can do for yourself, as well as your students. Stop by the centers on both campuses and check out our bulletin boards with tips on how to care for your mental health and grab some of our Make and Take Activities!

Certification Testing Scholarship:

RCTE offers a **one time** Certification Testing Scholarship! This can be used for the certification test of your choice. Qualified applicants must:

- Be a declared education major
- Be enrolled in, and/or have taken Pre-1
- Hold a 2.75 or higher GPA

Please note that we can not reimburse for testing, so please apply prior to registration.

APPLY HERE

Upcoming Events:

- **October 7th**–Yappy Hour, East Side of Bagley Hall, 11am–1pm
- **October 14th**–Yappy Hour, BAED 243, 4pm–5pm
- **October 16th and 17th** –Fall Break, Campuses Closed
- **October 23rd**– Boo-jee Budget, 1pm–3pm, Bagley Hall RM 120
- **November 1st**–Community Partner Fair, 8:45am–Noon, Broken Arrow Campus

Volunteer Opportunities

HallowZOOween @ Tulsa Zoo

Discovery Lab

Tulsa Street School Mentor

Thank you to our Donors!

We appreciate the following businesses who supported our centers this month:
Imperial Foods
McKee Foods

MEET THE TEAM



Katie Fox
Director



Katie has a background in Early Childhood Education with 10 years of experience in Broken Arrow and Union Public Schools. Fun fact: she owns an LLC with chickens and had over a hundred hatch this past spring!

Jamie Lindsey
TQ Coordinator



Jamie has a background in Early Childhood Education with 14 years of experience in Tahlequah Public Schools. Fun fact: she earned a trip to Hawaii with her skincare business!

Holly Gentry
Student Worker



Holly is a senior English Education major who will graduate this December. Future plans are heading straight to Graduate school in the Spring and working on a K-12 Leadership Master's degree. Fun Fact: she is a classically trained singer.

MEET THE TEAM



Dena Pace
Academic Coach



Dena has a background in Psychology and Mental Health, and her passion in life is coaching! Fun fact: She feels most at home in the water or on the tractor.

Erin Gilmore
Mentor Teacher



Erin has over 10 years of teaching experience in the public school system. She is married to her husband Spencer and they have a 3 year old son. Fun fact: Erin did her Pre-Il internship in Vienna, Austria!

Needing Support?

You can now schedule an appointment to meet with one of our team members on your respective campus by using the links listed below:



[RCTE-BA.YOUCANBOOK.ME](https://rcte-ba.youcanbook.me) (BA)



[RCTE-TQ.YOUCANBOOK.ME](https://rcte-tq.youcanbook.me) (TQ)



R
S
V
P

PUMPKIN PAINT EXTRAVAGANZA!

RCTE Boo-Jee Budget Paint Party

Thursday, October 23rd 1:00-3:00pm

**BGLY
120**



Hey Education Majors!

Come join us for a fall-tastic time!



Paint your own pumpkin



Sip on a Coke



Snack & relax



Grab some easy budgeting tips while you create!

Supplies provided—just bring your **enthusiasm!**

RCTE@nsuok.edu

Community PARTNER FAIR

NSU BROKEN ARROW

3100 E New Orleans St
Broken Arrow, 74014

8:45am-Noon
Light refreshments served

2025 PARTNERS

- Ag In The Classroom
- Bob Dylan/Woody Guthrie
- Cherokee Nation
Education Services
- OK Alliance for
Geographical Education
- Grand River Dam
Authority
- Oklahoma Council for
Social Studies
- Project Learning Tree
- The Learning Zoo
- Tulsa Health Department
School Health Program
- The Metropolitan
Environmental Trust
- Oklahoma Forestry
Services
- Oklahoma Literacy
Association

CALLING EDUCATORS!

Join us on Saturday,
November 1, 2025 at
NSU Broken Arrow to
hear from local and
statewide partners!
You will hear about
resources, field trip
opportunities, grants,
and in-class service
opportunities to help
supplement with
relevant, hands on
experiences.

Email rcte@nsuok.edu
for any questions.



REGISTER NOW

